

Blue Mountain Gallery
547 West 27th St. #200
New York City, NY 646-486-4730
Bluemountaingallery.org

Panel Discussion

The Long View: Creativity Over Time

Saturday February 11, 3 pm in the gallery and [on-line live](#)

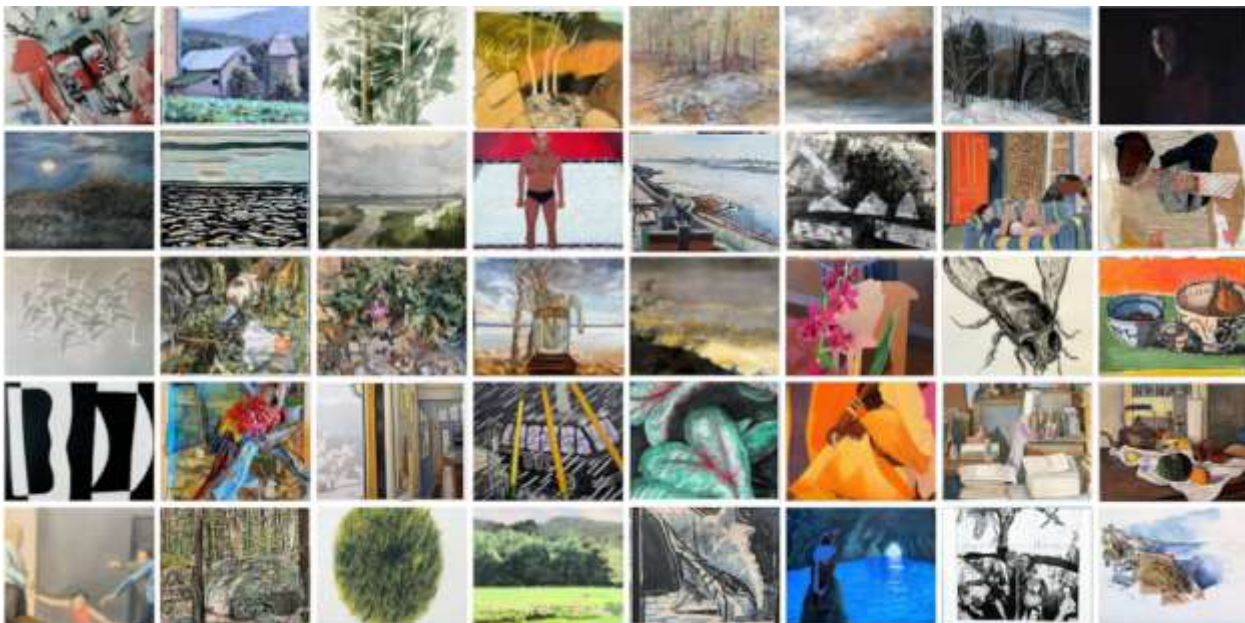
<https://youtube.com/live/LaPhyasNZIs?feature=share>

Moderator **Barbara Grossman**

in Conversation with Richard Castellana, Owen Gray, Janet Sawyer, Jenny Toth

In conjunction with the exhibition

[The Long View: Creativity Over Time](#), January 31 – February 25



Panel moderator **Barbara Grossman** has been a painter and teacher all her life. She is a graduate of Cooper Union, a Fulbright Scholar, a member of the National Academy of Design since 1994 and has been a recipient of several awards. She is a Founder of the Bowery Gallery where she exhibited for many years as well as in other galleries and universities in the USA. The Yale School of Art, University of Pennsylvania, Chautauqua, and New York Studio School are some of the places she has taught. Moderating a panel of seasoned painters is a challenge she anticipates with pleasure.

Panel - How does an artist mine who they are as an artist and who they evolve in to? The 40 artists in the exhibition are showing pairs of works that show a range of comparisons over time - from radical changes in content and media to growth that is not immediately perceptible. What drives the changes and growth? Four exhibiting artists, Richard Castellana, Owen Gray, Janet Sawyer, and Jennifer Toth will take part in the moderated discussion.

The Panelists:

RICHARD CASTELLANA paints still life, landscape, and figure compositions from a mix of observation, imagination, and memory. Since the 1970's he has exhibited widely and received national and international recognition and awards for his work. Castellana's work is included in numerous collections in the USA and Europe and his exhibitions have been reviewed in local NYC papers as well as the international, multi-lingual art magazine, *Next*, published in Rome, Italy. He lives and works in New York City.

OWEN GRAY moved to New York in 1975 to study with Nicholas Carone and Leland Bell at The Studio School. The New York Times critic Ken Johnson wrote that "his stroke is relaxed, but exacting" and described Gray's concerns and "all-over abstractions as a kind of primordial, peaceable kingdom, as far from the frenetic hard-edged modernity of New York City as one could get."

JANET SAWYER was among the founding students of the NY Studio School, and received a BA from SUNY Stony Brook and MFA from Brooklyn College. She lives and works in Manhattan and Montauk, NY and has exhibited continuously since 1972 in NYC, Paris, Berlin, and various American venues. Her work is in collections including the Metropolitan Museum of Art, West Publishing, Gibbons PC, Sterling Corp., Bryn Mawr College as well as private collections in the U.S. and Europe.

JENNY TOTH is a painter and mixed media artist who works primarily with animal imagery and imaginative self-portraiture. She is based in Manhattan and is an Associate Professor of Art at Wagner College on Staten Island. She received her MFA from Yale in 1998, and her undergraduate degree from Smith College in 1994 and has also studied at The New York Studio School. Her work has been in solo shows at Blue Mountain Gallery and group shows nationally. She has two dogs, two young sons, and a patient husband. She is passionate about octopuses, donkeys, birds, whales and elephants all of which populate her work.

Many of the artists in the exhibition will be in attendance.

There will be time for questions and discussion.

THE EXHIBITION

Each artist in the exhibition, which runs from January 31 to February 25th, has selected two works that demonstrate the continuities and transformations of their work over time. An illustrated [catalogue](#) includes statements by the artists about the juxtapositions of works from different stages in their career, looking back over many decades or many years. Forty-one current members and associates of Blue Mountain Gallery are represented. [Exhibition link](#)

